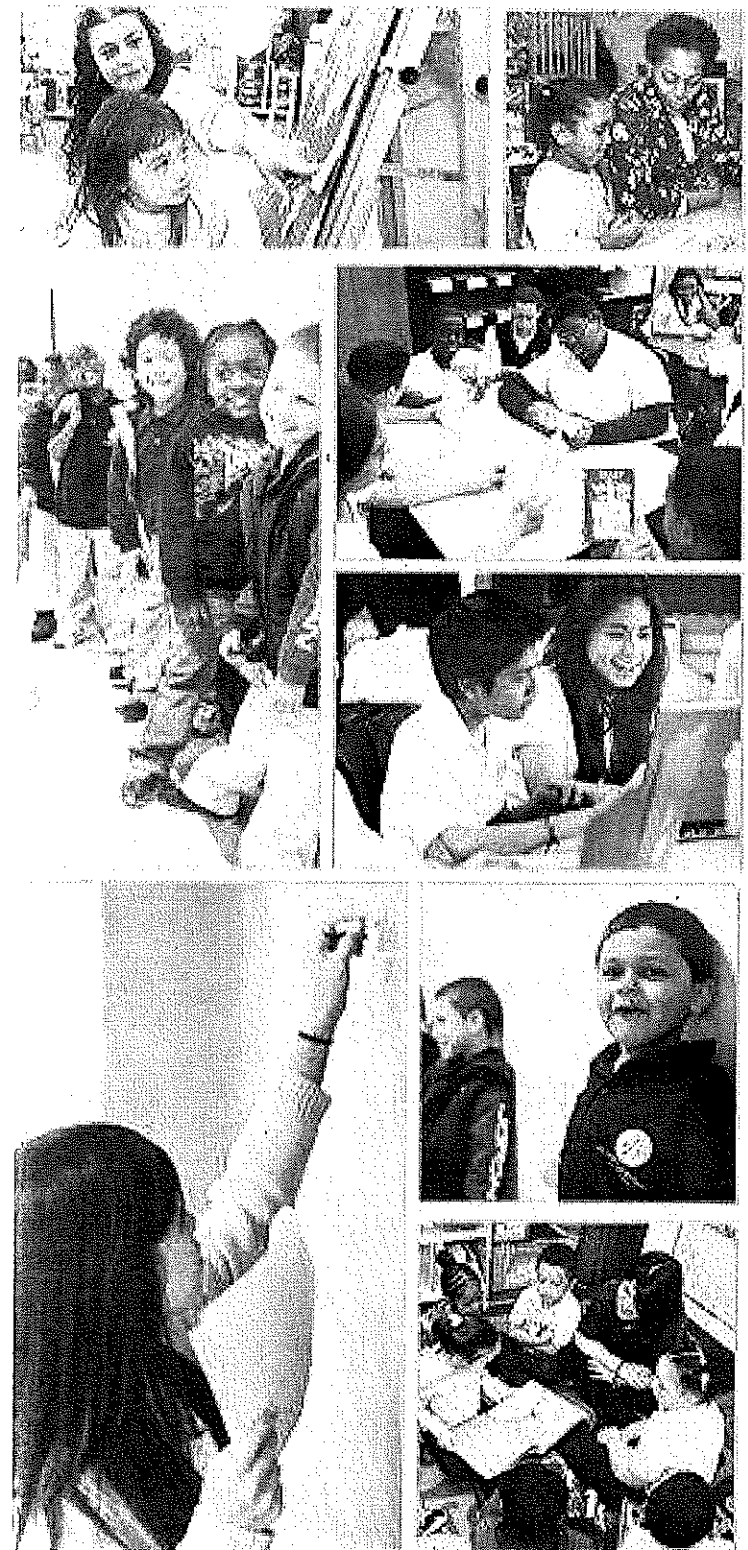




Special Education in New York City: Preparing for your Role as a Parent Leader

*The Division of Specialized Instruction and Student Support
(DSISS)*

June 24, 2017



Agenda

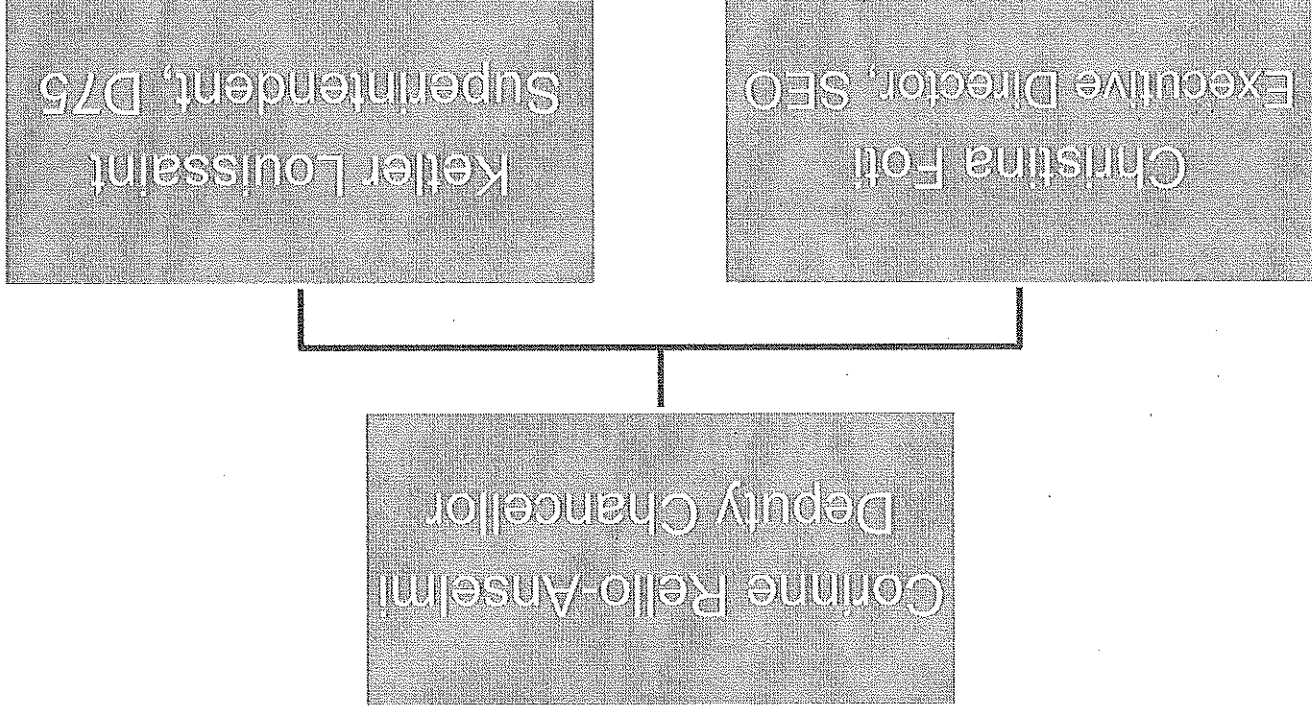
- I. Introductions
- II. The Division of Specialized Instruction and Student Support
- III. Vision and Goals for Special Education in NYC
- IV. Resources for Families
- V. Contacts
- VI. Questions

Introductions

- Our names and roles
- Your name, your council, and why you chose to become a parent leader

The Division of Specialized Instruction and Student Support (DSISS)

DSISS works to accelerate achievement of students with disabilities while ensuring compliance with federal, state, and local laws and regulations. DSISS includes the Special Education Office and D75.



Federal, State, and Local Law

- **Individuals with Disabilities Education Improvement Act (IDEIA)**
 - First enacted in 1975, IDEIA is a law ensuring services to children with disabilities throughout the nation. A key component is the requirement that students with disabilities receive a **Free and Appropriate Public Education (FAPE)** in their **Least Restrictive Environment (LRE)**.
- **New York State Regulations Part 200 and 201**
 - Placement shall be as close as possible to the student's home, and unless the student's IEP requires some other arrangement, the student shall be educated in the school he or she would have attended if not disabled.
 - A student with a disability must not be removed from education in age-appropriate regular classrooms solely because of needed modifications in the general education curriculum.

Mission and Vision of DSISS

The mission of special education in NYC is to support all students with disabilities in the attainment of the highest possible goals and to provide the tailored support needed to achieve those goals.

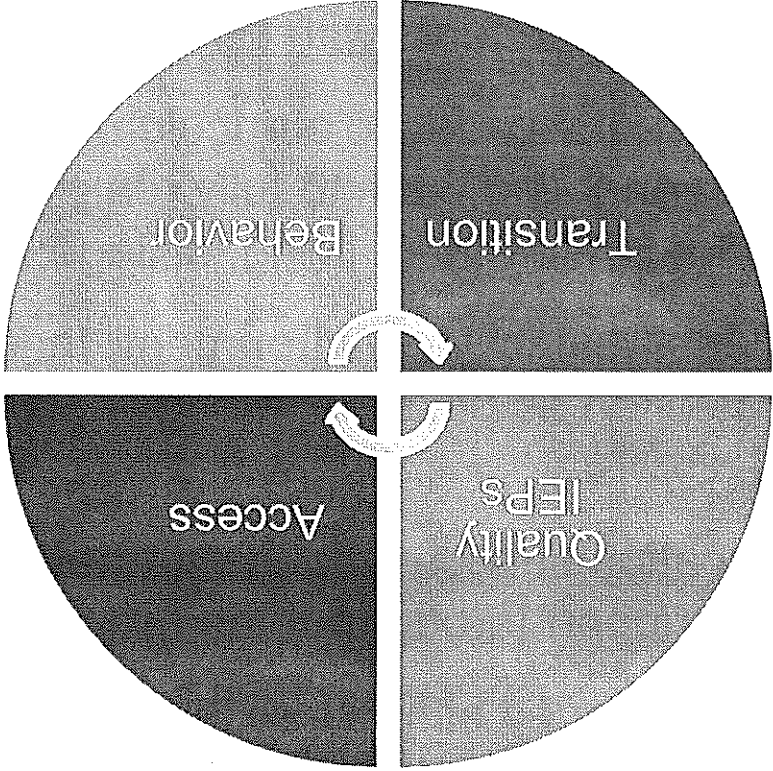
The vision is that all students with disabilities in NYC have access to great school communities, classrooms, instruction, services and curricula that maximize strengths and learning, support postsecondary transition, and promote opportunities for personal fulfillment.

Division Goals

Our goal is to ensure that all students with IEPs:

- have access to a rigorous academic curriculum and are held to high academic standards, enabling them to fully realize their potential and graduate prepared for independent living, college, and careers;
- are taught in the "least restrictive environment" that is academically appropriate, and, as often as possible, alongside students without disabilities;
- receive special education services that are targeted and provide the appropriate level of support throughout the school day; and
- are able to attend their zoned schools or the school of their choice, while still receiving the supports they need to succeed.

Special Education



Special Education Office (SEO)

- Supports District 1-32 schools in meeting the needs of students with disabilities;
- Oversees the ten regional Committees on Special Education (CSEs), which coordinate and conduct evaluations for students in preschool, charter, non-public, and state approved/supported schools; and
- Develops specialized programs within district schools, which include bilingual special education, ASD Nest, ASD Horizon, and ACES programs.

District 75

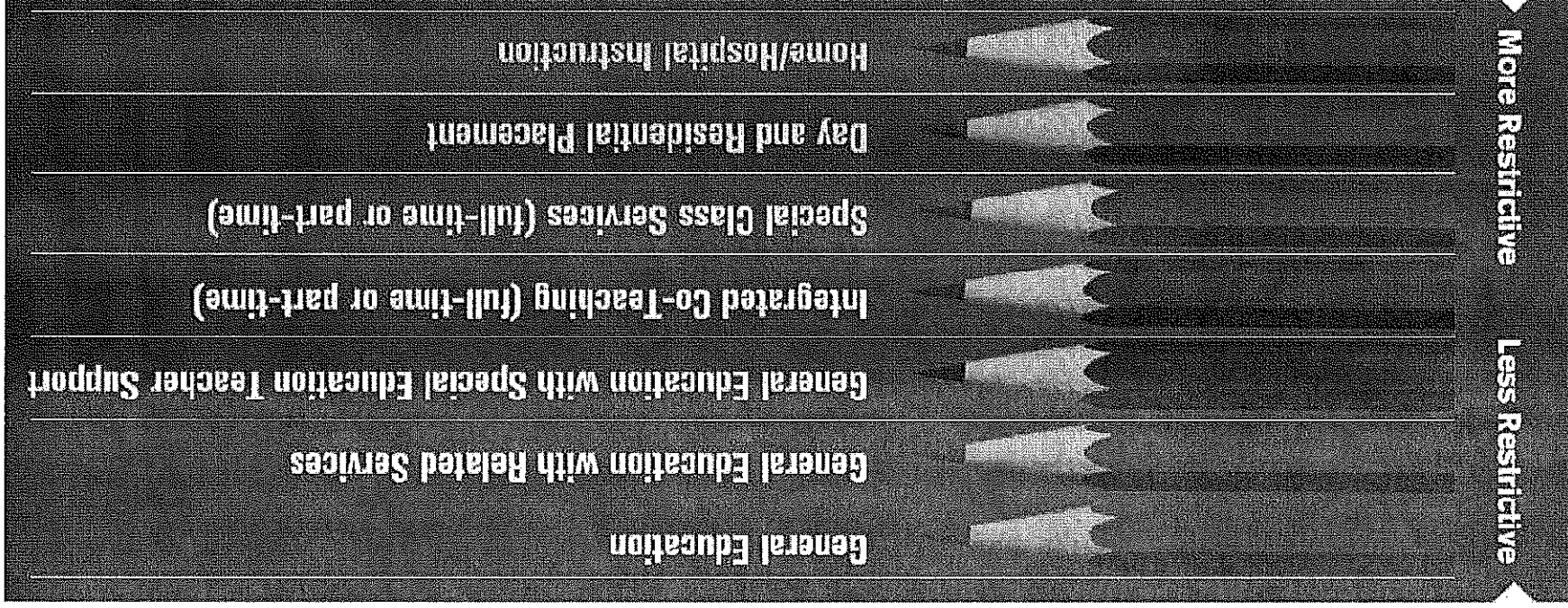
District 75 is responsible for students and staff in 60 school organizations at 350 sites across New York City. The district provides services to students in a variety of supported environments that include: general education classrooms, special classes located in community school buildings, special classes in specialized schools, agencies, hospitals, the home, and community-based vocational training sites.

Community Schools, Specialized Programs, and District 75

- **District 1 – 32 Schools:** Serve the majority of students with IEPs. At community schools, depending on need, students with disabilities participate in general education, Special Education Teacher Support Services (SETSS), Integrated Co-Teaching, Special Class, and/or related services.
- **Specialized Programs:** Serve some students with Autism Spectrum Disorder (ASD), Intellectual Disability, and English Language Learners (ELLs) who are recommended to receive special education supports and services in their home/native language. This includes ASD Nest, ASD Horizons, ACES, and Bilingual Special Education (BSE).
- **District 75:** Serves students who require a more restrictive environment or a higher level of support than those offered by community schools. This may include students who have ASD, significant cognitive delays, severe emotional challenges, sensory impairments and/or multiple disabilities. D75 provides educational, vocational, and behavior support.

Special Education is a service, not a place

- Our goal is to serve students in their **Least Restrictive Environment (LRE)**. This is the special education program or set of programs that gives students the greatest access to peers who do not have disabilities.
- Services, programs, and instruction are designed to meet the individual educational needs of a student with a disability.



Resources for Families

- The Division's Website: <http://schools.nyc.gov/academics/specialeducation>
- The Family Guide to Special Education & Other Documents
<http://schools.nyc.gov/Academics/SpecialEducation/FamilyResources/GuidesDocuments>

NYC Department of Education
Carmen Fariña, Chancellor

Parents and Families | Students | Employees | Community and Partners

Special Education

ASD Nest and Horizon
Learn about and apply for specialized programs for students with Autism Spectrum Disorders.
[Read More](#)

Getting Started

- › Referral
- › Evaluation
- › Individualized Education Program (IEP)

Understanding Services

- › Preschool Services
- › District 75
- › Related Services

Getting Help

- › Family Resources
- › Resolving Issues
- › Contacts

Contacts

Contacts for CCEC Members

Special Education Office – Shavonda Guilford, Sguilford@schools.nyc.gov

District 75 - Raymond Velez, Rvelez6@schools.nyc.gov

Inquiries

Special Education Hotline at 718-935-2007 or 311

specialeducation@schools.nyc.gov

turning5@schools.nyc.gov

relatedservices@schools.nyc.gov

specializedprograms@schools.nyc.gov

asdprograms@schools.nyc.gov

D75info@schools.nyc.gov

For other contacts visit the Special Education website

<http://schools.nyc.gov/Academics/SpecialEducation/Help/Contacts>