

*School Overcrowding & the New
five-year Capital Plan
Presentation to CPAC*

Leonie Haimson and

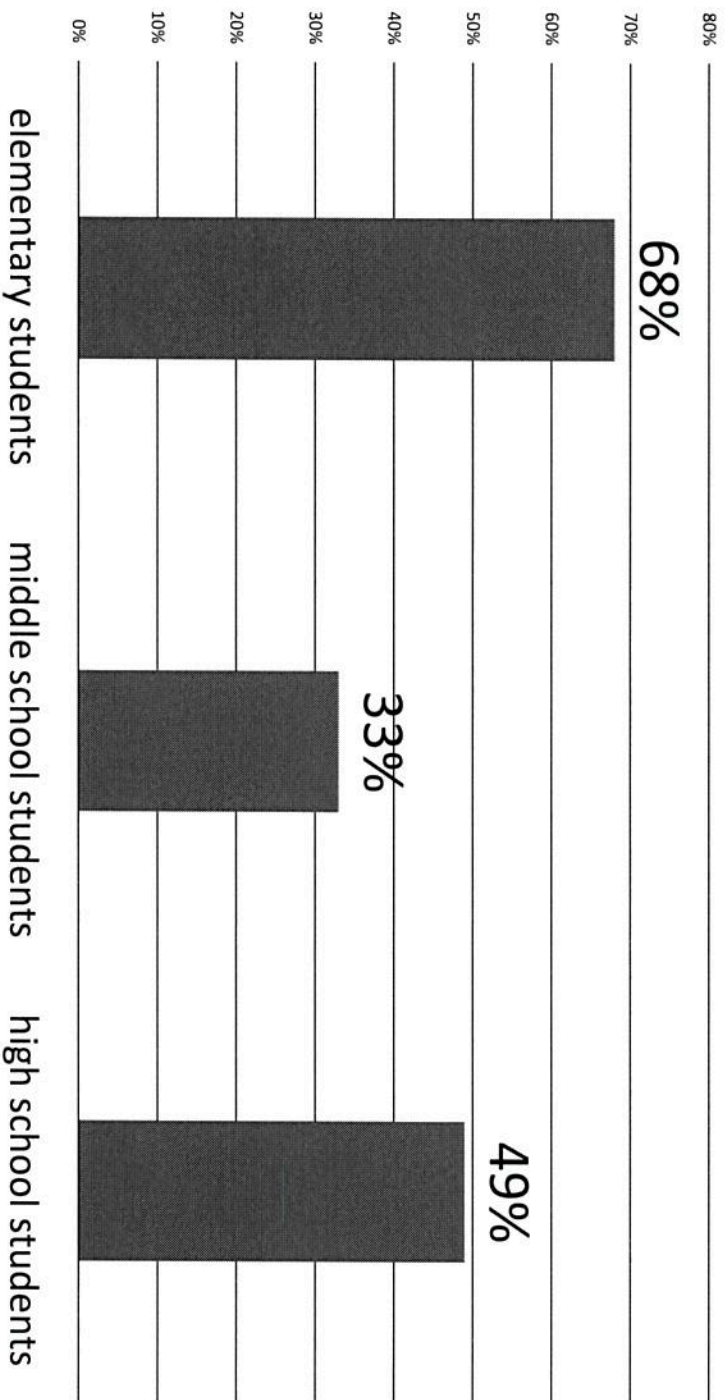
Class Size Matters

Oct. 11, 2018

info@classsizematters.org



575,000 NYC students in overcrowded schools (56% total)



Data source: Schools at or above 100% according to SCA "Blue Book" 2016-2017

Why are our schools so overcrowded?

- Bloomberg claimed to have created 100,000 new seats between 2004 and 2013
- Yet only 45,000 new NET seats created if seat loss taken into account
- About 55,000 seats were LOST due to lapsed leases, elimination of TCU's (trailers), annexes, and mini-buildings
- Also, enrollment grew fast especially at the elementary school level
- *The following charts are from our recent Seat Loss report, available online at www.classsizematters.org*

While 45,000 net seats gained citywide, nearly all were filled by growing number of charter school students

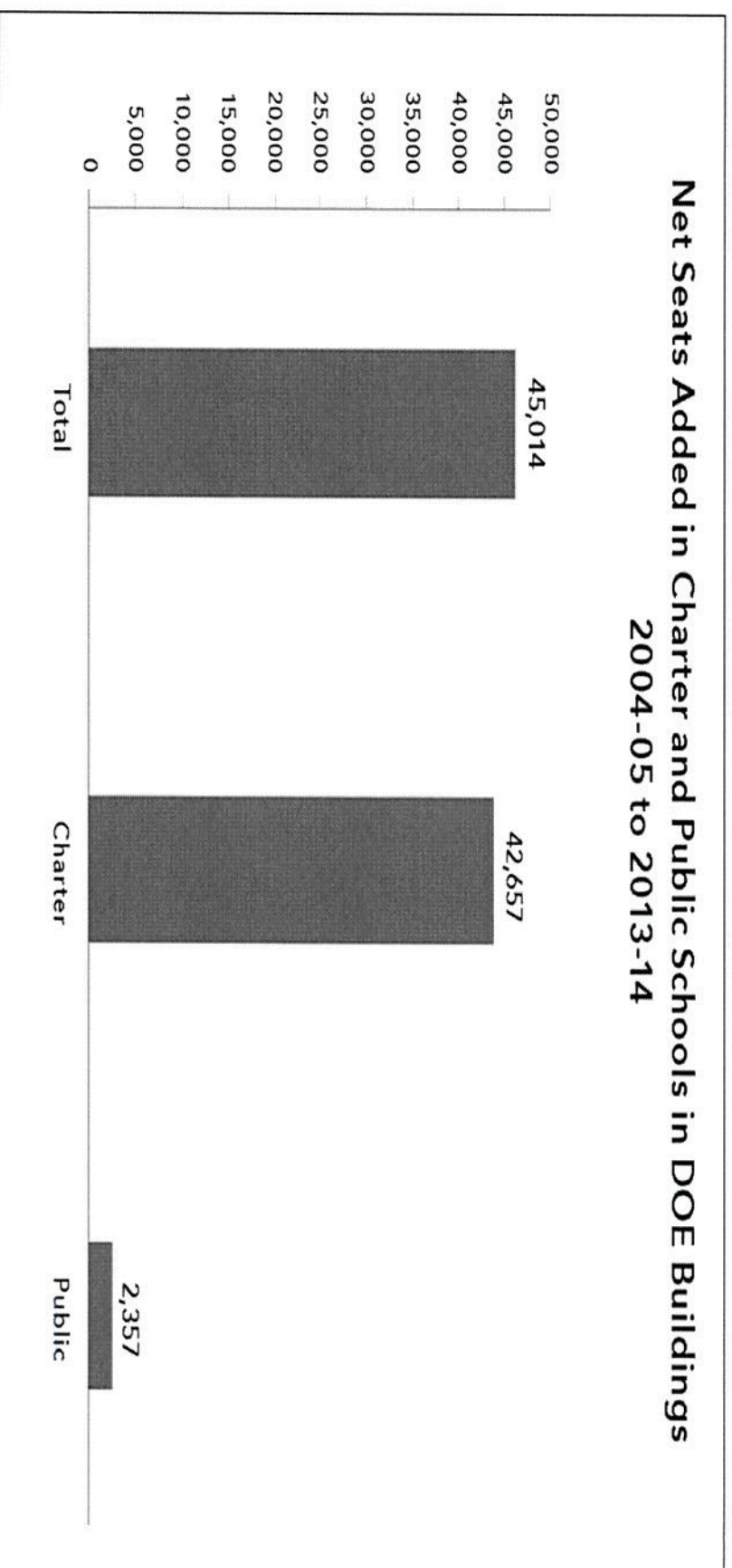


Figure 14: Net Seats Added in Charter & Public Schools between 2004-05 and 2013-14

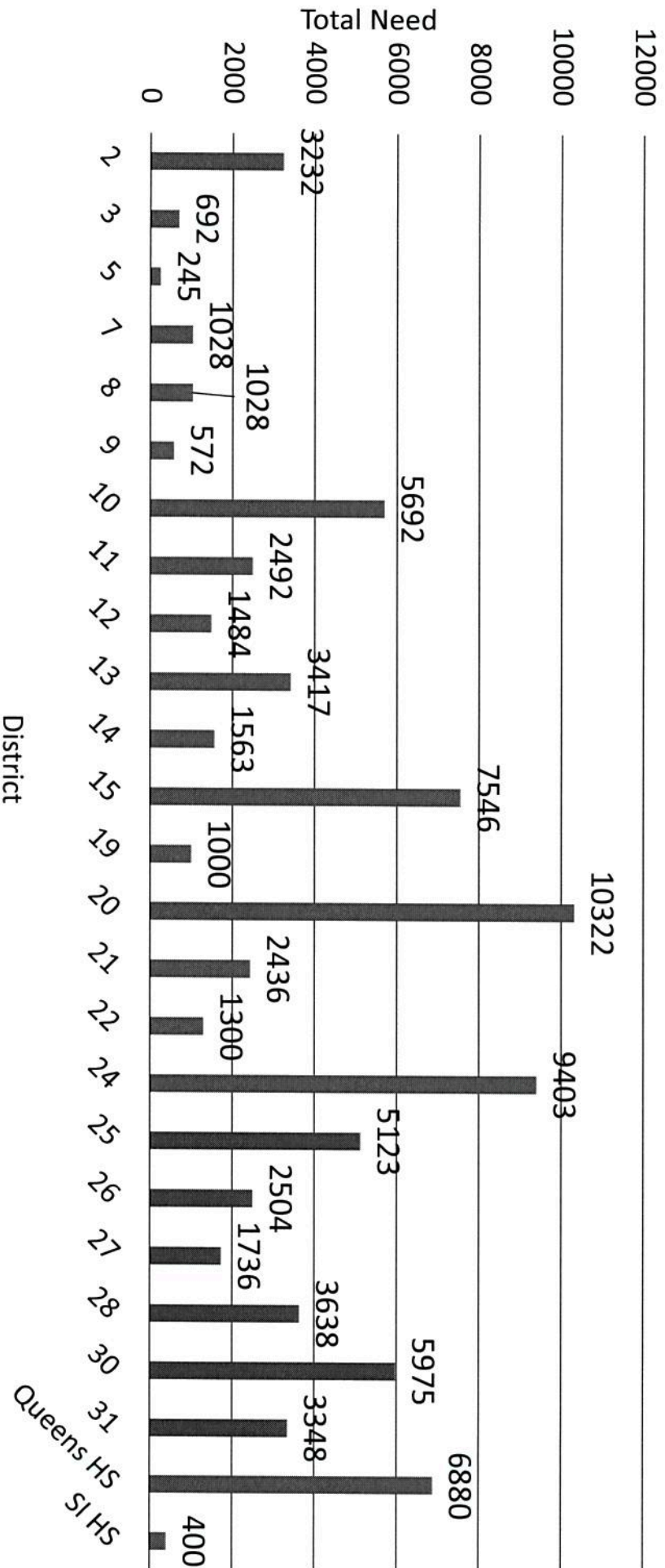
Current DOE five-year capital (2015-2019) plan underfunded

- Funds fewer than 45,000 K12 seats citywide – about half (54%) necessary to alleviate current overcrowding and accommodate enrollment growth, ***according to DOE estimates of need.***
- Two-thirds of these seats will not to be completed until 2021 or later-- long after the plan is over.
- Big variation across districts in the number and percent of seats funded compared to DOE's estimate of need.
- Bronx is the most underfunded borough according to the percent of unmet need; Queens in terms of total number of unfunded seats.

DOE Identified need for 83,056 K-8 seats citywide

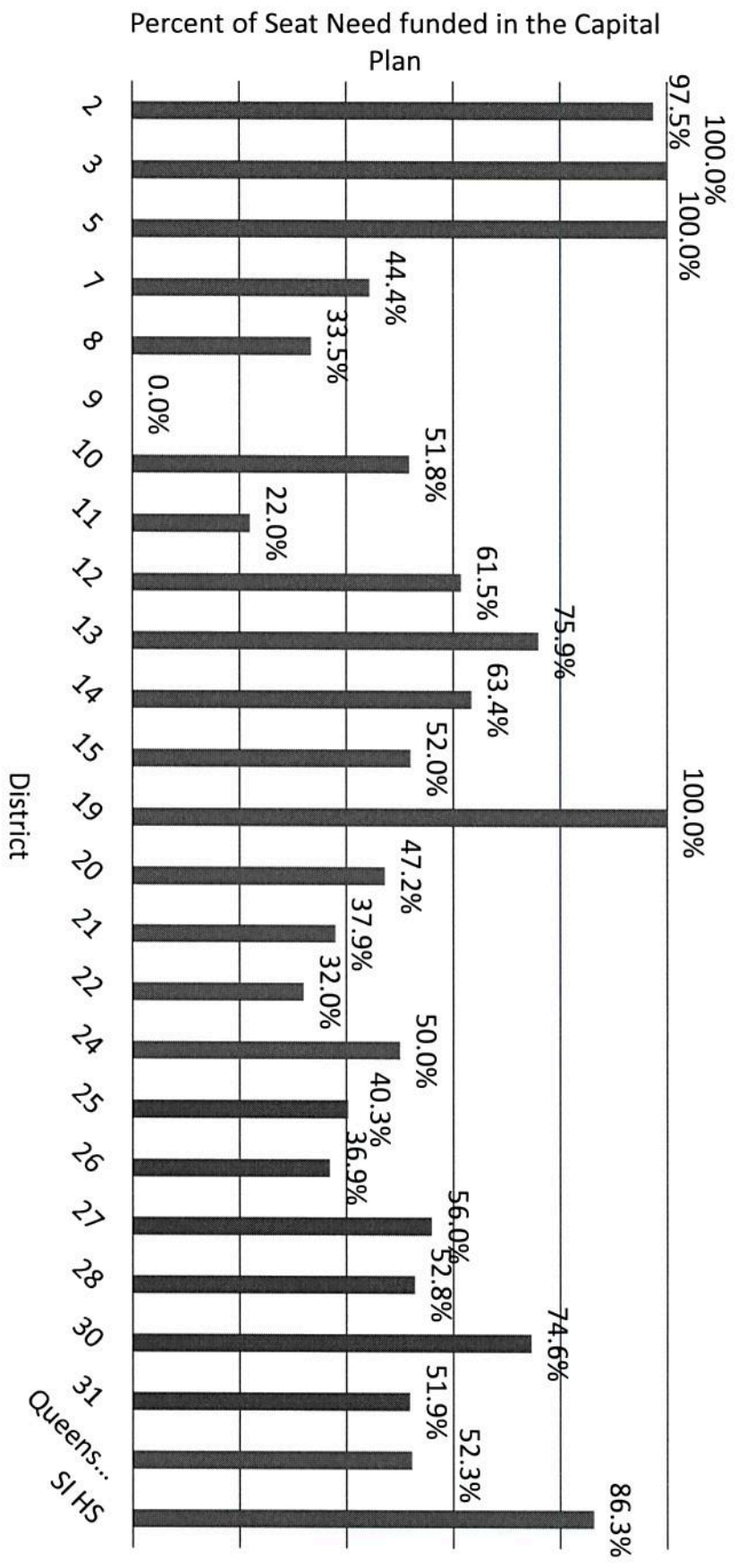
Nov. 2017 capital plan

Districts not included below have NO need for new seats according to DOE



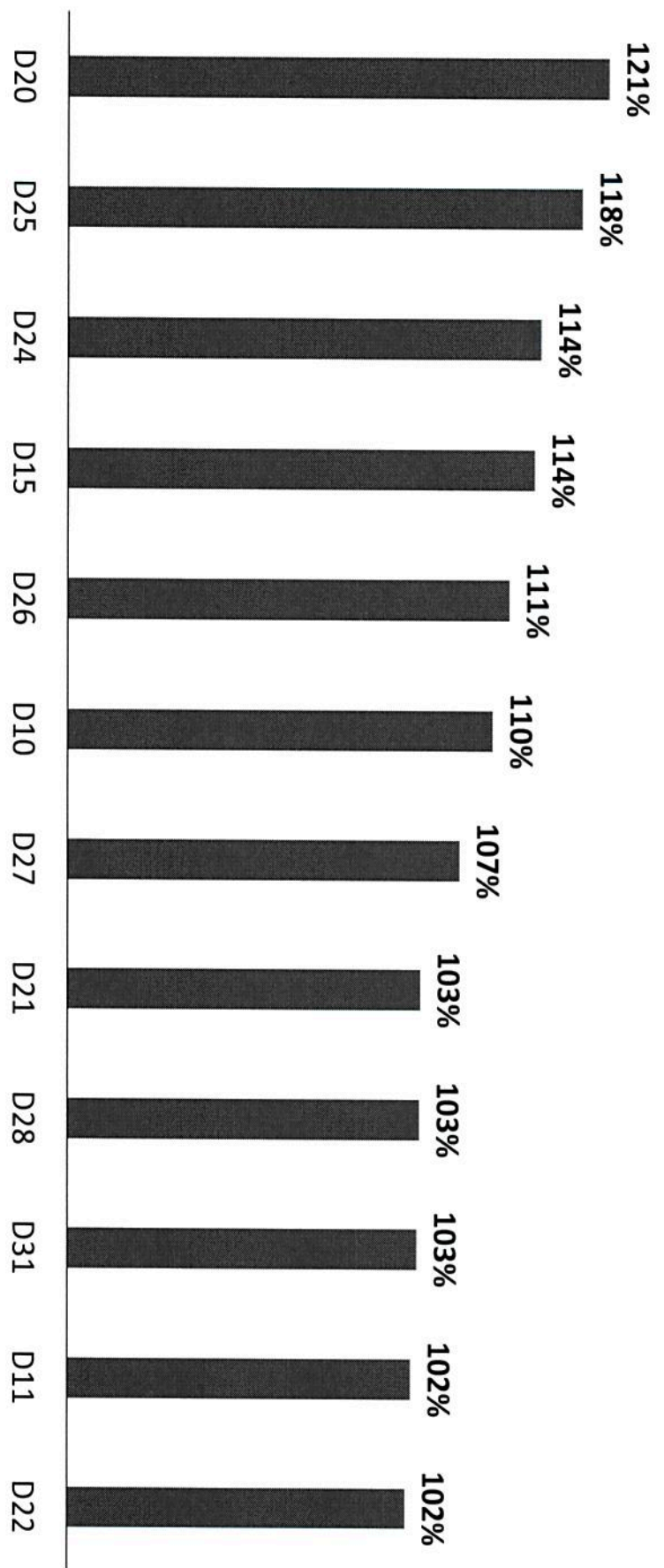
54% K-8 seats funded citywide compared to DOE estimate of need

Data: Nov. 2017 capital plan



12 Districts average 100% or more utilization

Data Source: 2016-2017 Blue Book



Yet we also know there are many problems with the DOE's seats need projections

- They underestimate the need for space as they do not include UPK or 3K seats – though > 25,000 are in DOE schools.
- They use a formula based on housing units and census data over 20 years old.
- They are not aligned with small classes but class sizes larger than the average citywide (28 in grades 4-8 and 30 in HS)

Problems with the housing starts figures used to project enrollment

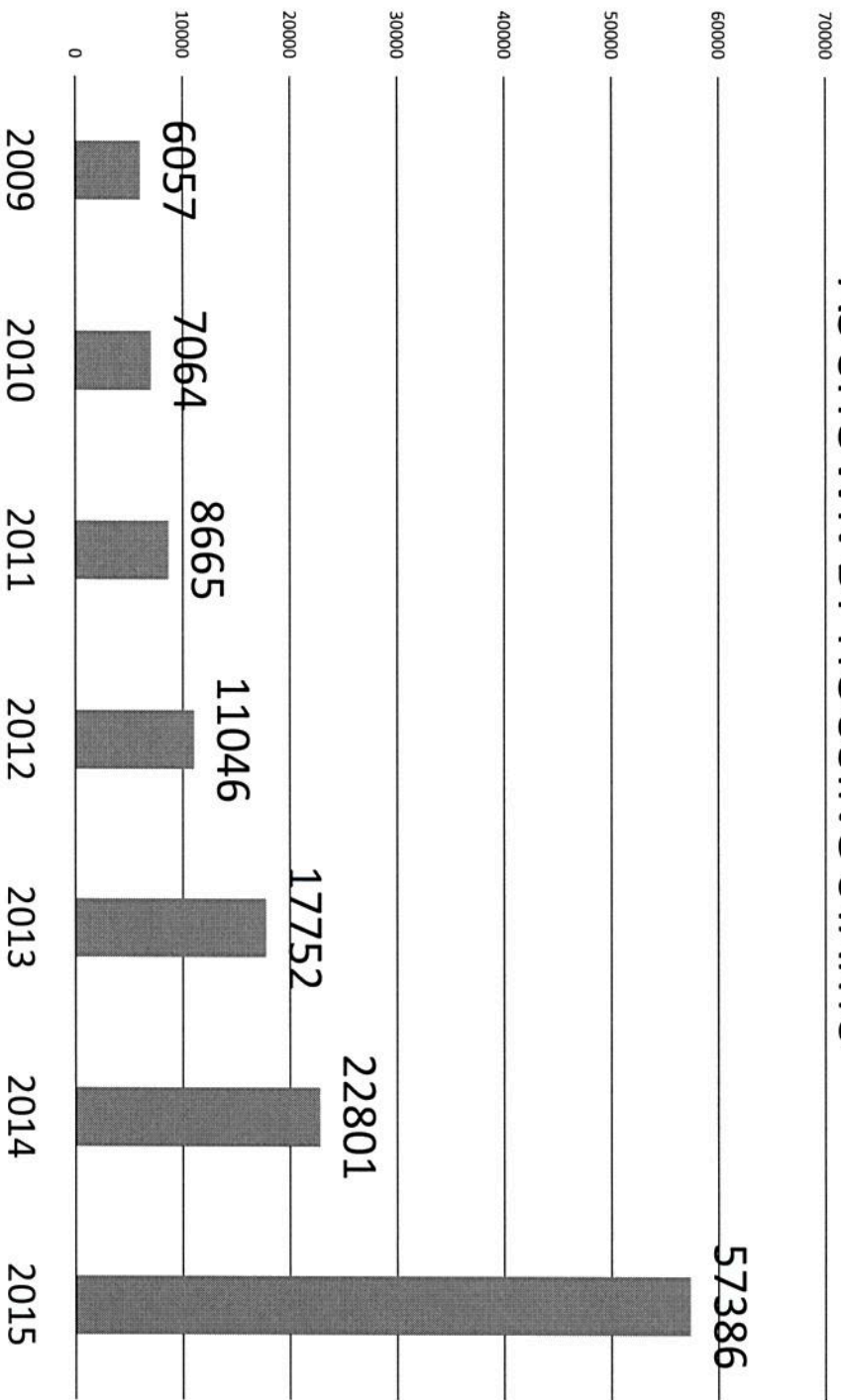
- In 20 of 32 school districts, NO difference between housing start data for 5 yr and 10 yr projections
- For example, data shows 175,514 new housing units to be built citywide 2015-2019 but fewer than 2,000 in the years 2019-2024
- Not a single unit projected to be built in Brooklyn from 2019-2024.

Data source: NYC SCA, Projected new Housing starts used in 2016-2024 Enrollment projections, 2016-2029 capital plan, March 2017

Problems with school planning process

- Thresholds in city planning process very high
- A new residential project has to be predicted to increase school overcrowding by at least 5% to even consider need for new school -- even where schools are already overcrowded
- Planning process does not take into account cumulative residential development -- only considers each proposed project separately.

NYC EXPERIENCING A BUILDING BOOM AS SHOWN BY HOUSING STARTS

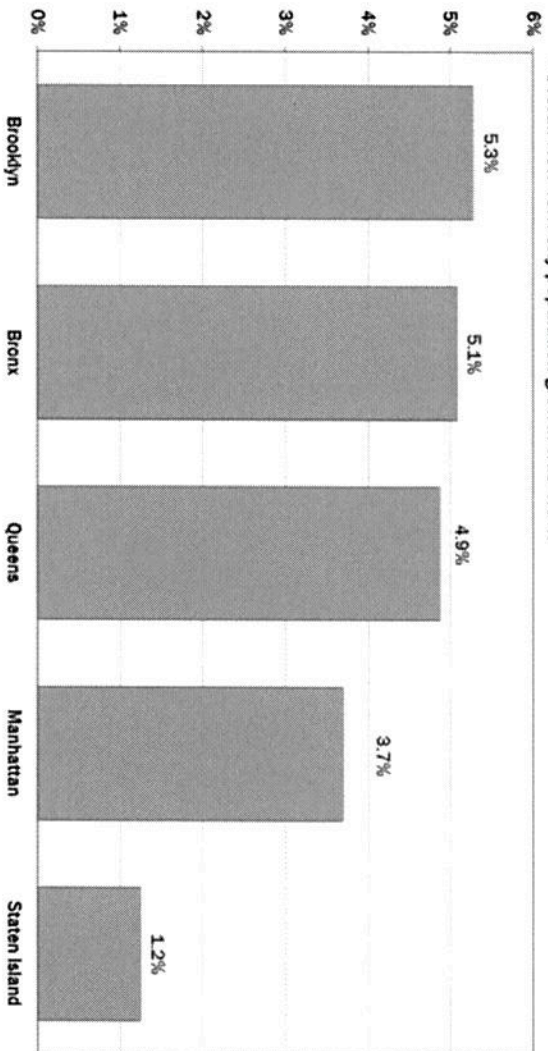


City
population is
growing fast

Population Grew in Every Borough

2010 - 2015 Net Population Change

• Overall New York City population growth was 4.6%.



Source: NYC Department of City Planning

New five year plan will be introduced this fall

- In 2016, the Mayor promised to fully fund the capital plan to meet the DOE projected need for school seats.
- That means at least 38,000 currently unfunded seats plus whatever portion of 44,000 K12 seats in the current plan are unbuilt.
- *Will you sign a letter asking him to fulfill his promise?*

We need a new planning process for schools

- Given rapid pace of development throughout the city, school overcrowding will become even worse
- We need reforms so that schools are built along with new housing and not lagging years later & based on realistic 10-yr not 5yr projections
- In most large states and districts, developers have to pay an “impact fee” to help fund new infrastructure including schools, ***but not in NYC***

OTHER ISSUES

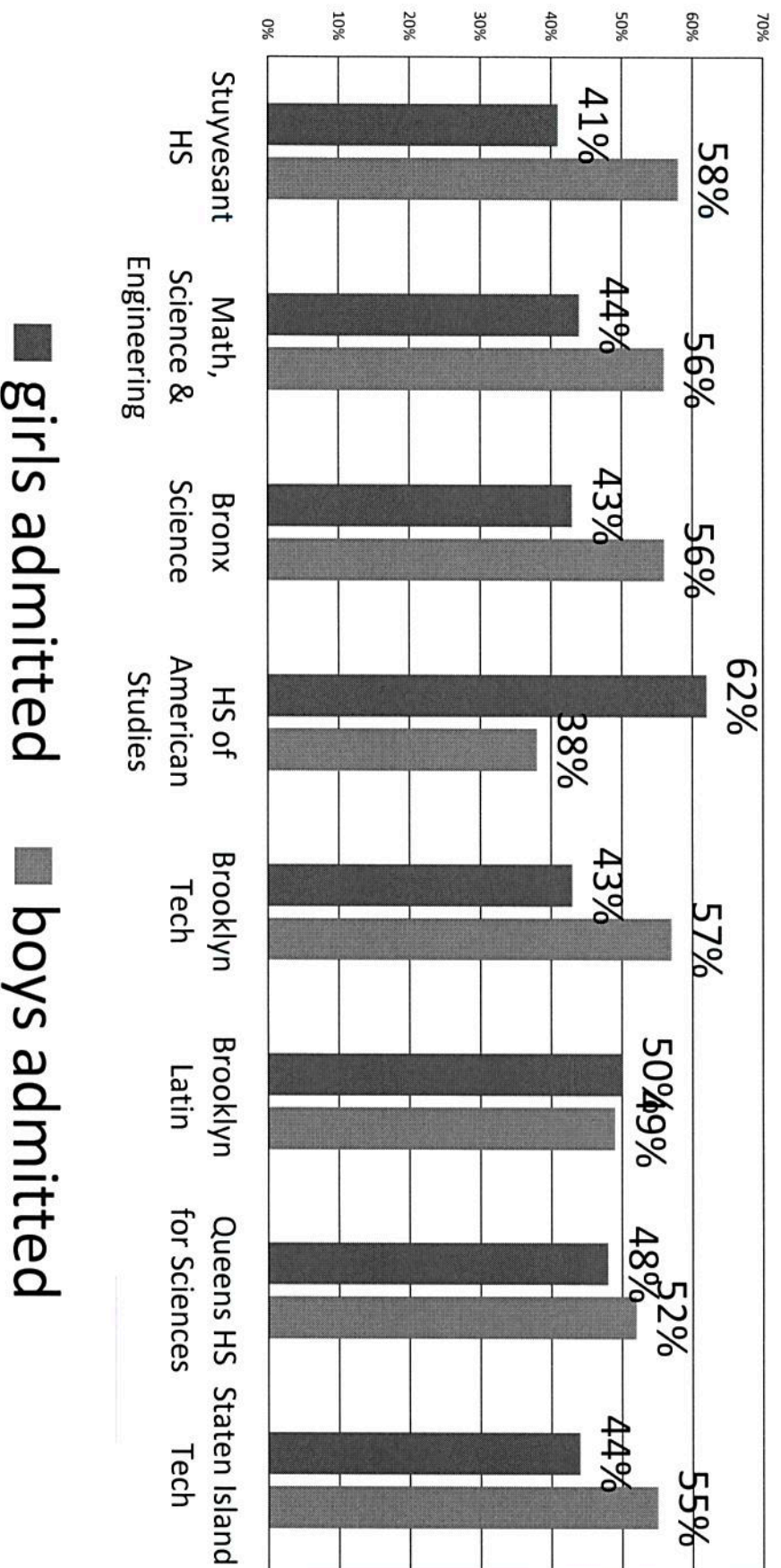
Our class size lawsuit

- The Contracts for Excellence law passed in 2007 required NYC to lower class sizes in all grades – instead class sizes have increased citywide
- Nine NYC parents & CSM filed a lawsuit in January 2018 vs State Education Dept & NYC DOE for failure to reduce class
- August Judge ruled against us.
- Judge Zwack did not engage with any of the facts or our legal arguments and just said that the State commissioner has complete discretion to determine whether the city has complied with the law.
- We are now in the process of appealing the case.

Two other issues we are working on

- College Board: PSAT and SAT asks students personal questions and sells their data – US Dept. of Education says violates federal and state law
- Gender bias of SHSAT – girls do better on state exams and grades but far worse on that exam which has been shown to be biased vs girls.
- We are looking for parents concerned about either of these issues.

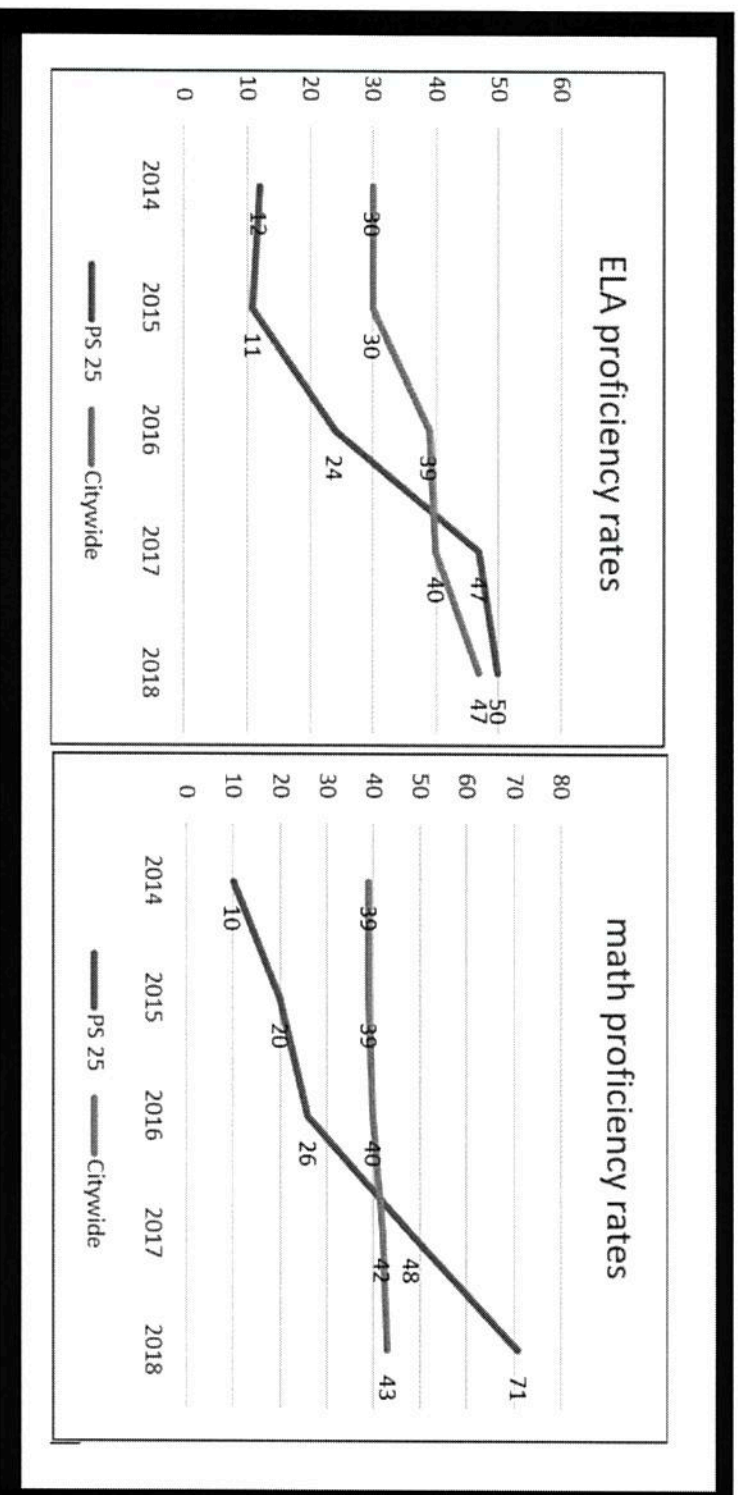
Girls vs Boys admitted to specialized high schools



PS 25 – small school in District 16

- We are fighting to save the school which DOE wants to close due to low enrollment
- DOE wants to close it and put two charter schools in the building
- Yet PS 25 outperforms NYC average on test scores despite 100% children in poverty, 22% homeless, about 33% children with special needs

PS 25 proficiency rates on state tests 2014-2018



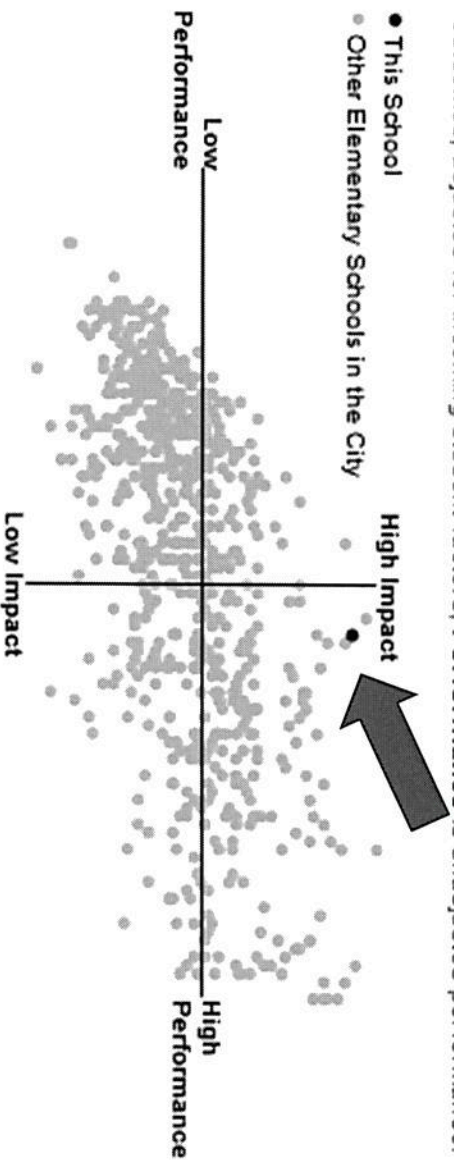
PS 25 has the 4rd **highest** positive impact on student achievement of any of the 661 elementary schools in NYC according to DOE

Impact and Performance ● ● 2017

2017

Based on all student achievement metrics, **Impact** measures school against expected outcomes, adjusted for incoming student factors; **Performance** is unadjusted performance.

- This School
- Other Elementary Schools in the City



The Blue Dot is PS 25

How can you help?

- Join our mailing list at www.classsizematters.org or <https://www.classsizematters.org/sign-up-for-our-newsletter/>
- Sign our letter to the Mayor/Chancellor to fully fund the Capital plan
- Invite us to speak at your Presidents Council or CEC
- Any questions? Email us at info@classsizematters.org